

# PRESTO



# GEOWEB® CULVERT OUTFLOW PROTECTION



**PROJECT LOCATION:** Milwaukee, Wisconsin

## PROJECT SCOPE:

A bioengineered channel protection solution was designed for the City of Milwaukee Metropolitan Sewer District's Underwood Creek. Using Presto Geosystems' Geoweb® System, coir fabric and willow plantings, the channel system provided vegetated protection at one of the creek's downtown culvert outfall location.

Soil confined in the Geoweb system and layered with a defined setback creates a flexible retaining wall system that supports vegetation. Because of the nature of the system's open outer cells to contain the growing medium, a coir fabric was wrapped over each Geoweb lift to protect the individual sections from potential topsoil loss from intermittent high flows during rain events.

Designer Dale Miller, Mainstream Restorations, incorporated a natural solution that would remain structurally sound, sustain anticipated flows and be environmentally-friendly.



## BENEFITS OF THE GEOWEB® CHANNEL PROTECTION SYSTEM

### PERFORMANCE:

- The Geoweb layered system performs well in soft soil environments and can tolerate reasonable differential settlement without loss of structural strength.
- Vegetated systems can withstand relatively high intermittent flows for short periods.

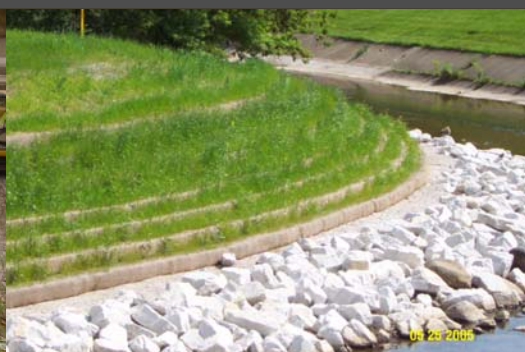
### ENVIRONMENTAL:

- The permeable fascia allows stormwater to permeate the structure providing natural water infiltration and reduction of stormwater runoff.

- Vegetated channels are typically cooler than MSE walls, reducing the heat island effect in cities.

### AESTHETICS:

- Vegetated retaining walls offer natural blending with the environment and allow designers and owners to choose vegetation and plantings ideal for the location.



## FOR MORE INFORMATION:

Manufacturer: Presto Geosystems, Appleton, Wisconsin Ph: 800-548-3424 ■ [www.prestogeo.com](http://www.prestogeo.com)  
Wisconsin Distributor: Ero-Tex, Menomonee Falls, Wisconsin Ph: 866-437-6839 ■ [www.ero-tex.net](http://www.ero-tex.net)

*creating sustainable environments*