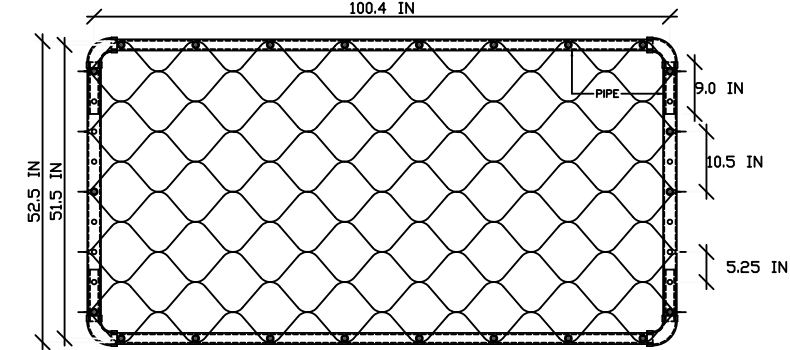
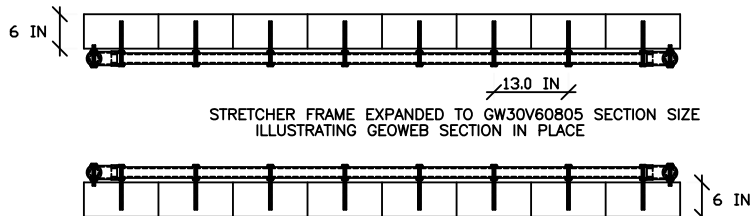


TYPICAL STRETCHER FRAME
SET TO GW30V60803 SECTION SIZE

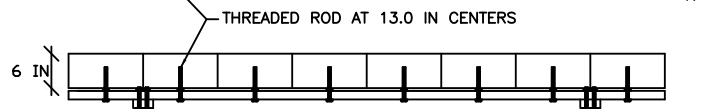
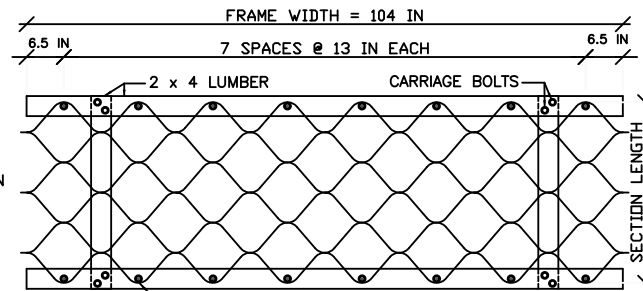


STRETCHER FRAME EXPANDED TO GW30V60805 SECTION SIZE
ILLUSTRATING GEOWEB SECTION IN PLACE

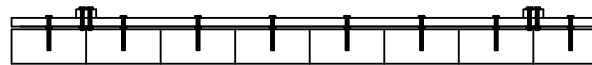


STRETCHER FRAME TURNED OVER AFTER GEOWEB SECTION PLACED

EXPANDABLE STRETCHER FRAME
WITH EXTENDER PIPES FOR GW30V60803 TO GW30V60806 SECTIONS

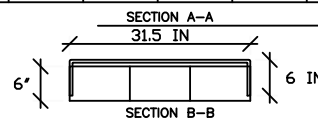
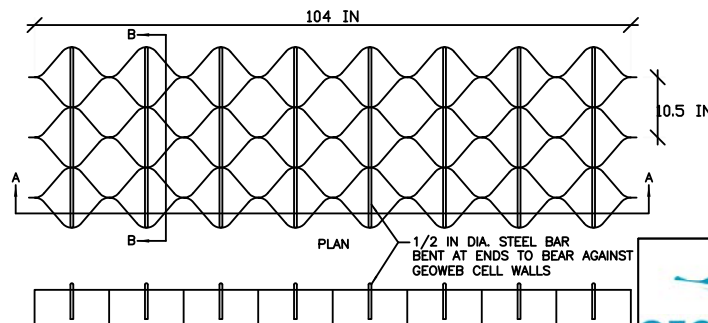


SIDE VIEW - UPSIDE DOWN FOR EXPANSION OF GEOWEB SECTION



SIDE VIEW - TURNED OVER FOR PLACEMENT OF GEOWEB SECTION

TYPICAL WOOD STRETCHER FRAME
FOR GW30V60803 SECTION SIZE



TEMPORARY STRETCHING METHOD FOR INSTALLATION
OF GW30V GEOWEB SECTIONS

TABLE 1
EXPANDED GEOWEB SECTION LENGTH

CELLS LONG	SECTION LENGTH	
	(mm)	(in)
3	800	31.5
4	1067	42
5	1334	52.5
6	1600	63
7	1867	73.5

PARTS LIST - EXPANDABLE STRETCHER FRAME

- 16 - 1/2 IN X 7-1/2 IN) THREADED ROD
- 32 - 1/2 IN NUTS WITH WASHERS
- 4 - 1/2 IN X 3-1/2 IN BOLTS
- 4 - 1/2 IN NUTS WITH WASHERS
- 4 - 2 IN ID ELBOWS
- 4 - 1-15/16 IN OD PIPE
- 2 - 2 IN ID EXTENDER PIPE

PIPE AND ELBOW DIMENSIONS ARE BASED ON STANDARD STEEL PIPE SIZES. DIMENSIONS MAY VARY SLIGHTLY FOR STRETCHER FRAMES FABRICATED WITH ALUMINUM OR PVC PIPE AND ELBOW COMPONENTS.

EXTENDER PIPE DIMENSIONS

- 3 TO 4 CELL LONG GW30V SECTIONS - 22.1 IN
- 5 TO 6 CELL LONG GW30V SECTIONS - 43.1 IN
- 7 CELL LONG GW30V SECTIONS - 53.6 IN

EXTENDER PIPE DIMENSIONS MAY VARY DEPENDING UPON ELBOW DIMENSIONS. CHECK ELBOW DIMENSIONS BEFORE DRILLING HOLES IN PIPE AND EXTENDER PIPE.

PARTS LIST - WOOD STRETCHER FRAME

- 16 - 7/16 IN X 7 IN CARRIAGE BOLTS
- 8 - 7/16 IN X 4 IN CARRIAGE BOLTS
- 24 - 7/16 IN FLAT WASHERS
- 24 - 7/16 IN HEX NUTS
- 2 - 2 X 4 X 10" LUMBER
- 2 - 2 X 4 X "XX" LUMBER

WHERE "XX" EQUALS:

- GW30V60803 35"
- GW30V60804 45"
- GW30V60805 56"
- GW30V60806 66.5"
- GW30V60807 77"

PARTS LIST - TEMPORARY STRETCHER BARS

- 8 - 1/2 IN X 43.5 IN STEEL BARS PER SECTION

THIS DRAWING IS COPYRIGHTED AND BASED UPON THE USE OF GENUINE GEOWEB MANUFACTURED BY PRESTO GEOSYSTEMS. ANY USE OF THIS DRAWING FOR ANY PRODUCT OTHER THAN THAT MANUFACTURED BY PRESTO GEOSYSTEMS IS STRICTLY PROHIBITED.



PRESTO PRODUCTS CO.
670 NORTH PERKINS STREET
APPLETON, WI 54914
920-738-1342
WWW.PRESTOGEO.COM

GENUINE GEOWEB®
EARTH INSTALLATION TOOLS

PRESTO, GEOWEB, AND ATRA ARE REGISTERED TRADEMARKS OF PRESTO PRODUCTS.

DATE	APRIL 2011	FILE NAME	GWRW6F.DWG
SCALE	NTS	SHEET	1 © 2010 PRESTO GEOSYSTEMS